




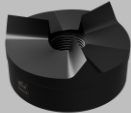
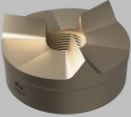
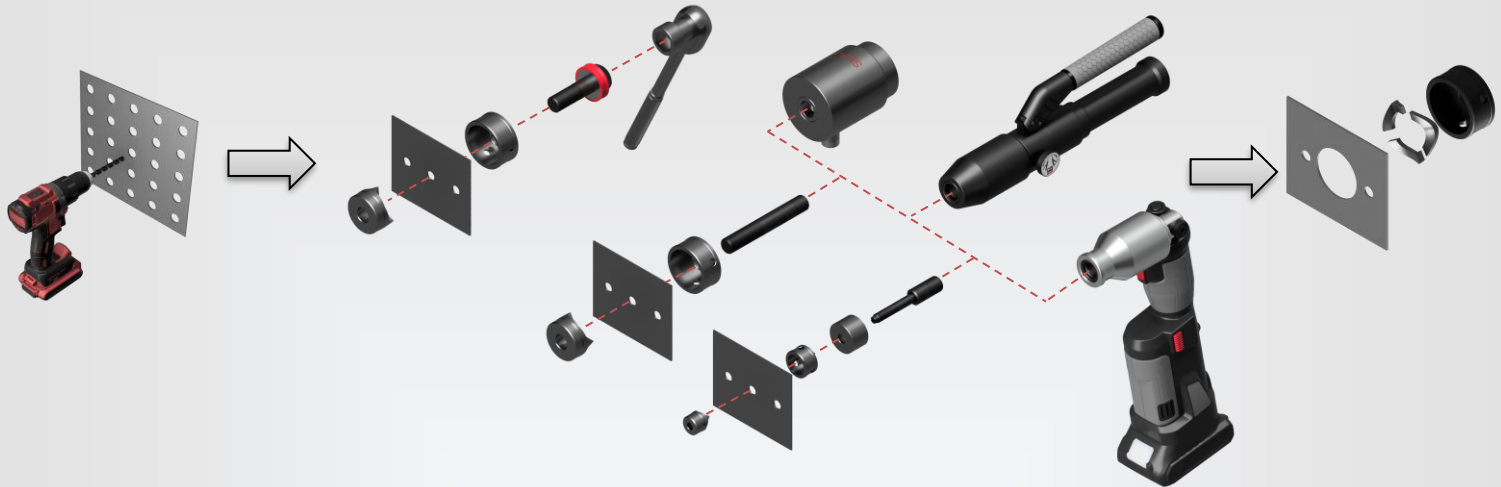


|  |  |  |  | BLECHLOCHER RIX PUNCH  | BLECHLOCHER RIX TRI STAR  | BLECHLOCHER RIX TRI STAR+  |
|---|---|---|---|--|--|---|
| Geeignet für | Qualified for | Approprié pour | Adecuado para | ✓ | ✓ | ✓ |
| Normalstahl S235 F ≈ 370 N/mm ² | Mild steel S235 F ≈ 370 N/mm ² | Acier normal S235 F ≈ 370 N/mm ² | Acero suave S253 F ≈ 370 N/mm ² | - | - | ✓ |
| Edelstahl F ≈ 600 N/mm ² | Stainless steel F ≈ 600 N/mm ² | Acier inox F ≈ 600 N/mm ² | Acero inoxidable F ≈ 600 N/mm ² | - | - | - |
| Materialstärke bei der Verwendung von | Material thickness for | Épaisseur du matériau à l'utilisation de | Grosor de material a la utilización de | | | |
| Ø 6 mm Zugschraube | Ø 6 mm tension screw | Ø 6 mm vis de traction | Ø 6 mm tornillo tensional | - | 1,5 mm | - |
| Ø 9,5 mm Zugschraube | Ø 9,5 mm tension screw | Ø 9,5 mm vis de traction | Ø 9,5 mm tornillo tensional | 2 mm | 2 mm | - |
| Ø 11,1 mm Zugschraube | Ø 11,1 mm tension screw | Ø 11,1 mm vis de traction | Ø 11,1 mm tornillo tensional | - | - | 2 mm |
| Ø 19 mm Zugschraube | Ø 19 mm tension screw | Ø 19 mm vis de traction | Ø 19 mm tornillo tensional | 3 mm | 3 mm | 2,5 mm |
| Durchmesser | Diameter | Diamètre | Diámetro | | | |
| | | | | 12,5 mm/M12/PG7 - 116 mm | 12,5 mm/M12/PG7 - 63,5 mm/M63 | 15,2 mm/PG9 - 63,5 mm/M63 |
| Sonderanfertigungen | Custom-made products | Fabrication spéciale | Productos a medida | ✓ | ✓ | ✓ |
| Ø für Vorbohren | Pre-drill Ø | Ø pour préperçage | Ø para preperforación | | | |
| Ø 6 mm Zugschraube | Ø 6 mm tension screw | Ø 6 mm vis de traction | Ø 6 mm tornillo tensional | - | 6,2 mm | - |
| Ø 9,5 mm Zugschraube | Ø 9,5 mm tension screw | Ø 9,5 mm vis de traction | Ø 9,5 mm tornillo tensional | 11 mm | 10 mm | - |
| Ø 11,1 mm Zugschraube | Ø 11,1 mm tension screw | Ø 11,1 mm vis de traction | Ø 11,1 mm tornillo tensional | - | - | 11,5 mm |
| Ø 19 mm Zugschraube | Ø 19 mm tension screw | Ø 19 mm vis de traction | Ø 19 mm tornillo tensional | 20,5 mm | 19,5 mm | 19,5 mm |
| Ø 28,3 mm Zugschraube | Ø 28,3 mm tension screw | Ø 28,3 mm vis de traction | Ø 28,3 mm tornillo tensional | 30,5 mm | - | - |
| Bearbeitungs- möglichkeit durch | Usable with | Possibilité d'usinage avec | Possibilidad de mecanizado con | | | |
| Schraubenschlüssel oder Ratsche | Wrench or ratchet | Une clé de serrage ou clé cliquet | Llave de tuercas o carraca | ✓ Bis/Up to/Jusqu'à/hasta Ø89mm | ✓ | ✓ |
| Hydraulikantrieb | Hydraulic operation | activation hydraulique | Accionamiento hidráulico | ✓ | ✓ | ✓ |



Achtung: Gewinde der Zugschrauben immer gut ölen.
Aufsetzen der Stempelspitzen auf dem Matrizenboden vermeiden.



Attention: Threads always to be greased sufficiently.
Punch tips must not touch die bottom.



Attention Toujours bien huiler le filetage des vis de traction.
Éviter de poser la pointe du poinçon sur l'outil inférieur.



Atención: Mantenga las roscas de los tornillos de ajuste siempre bien aceitadas.
Evite la colocación de las puntas del troquel sobre el plato de la matriz.

